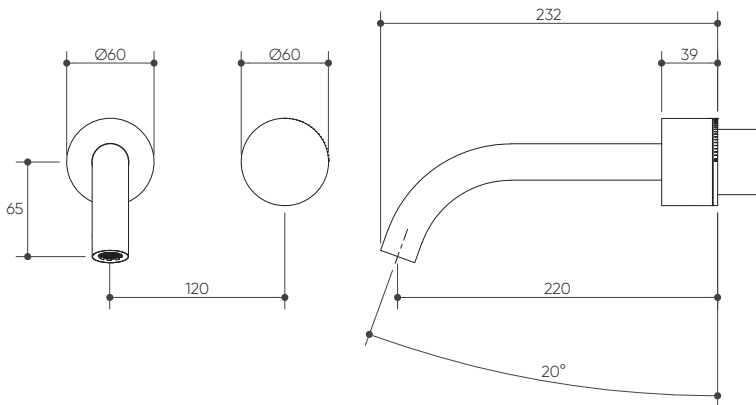


CAHYA Wall Basin/Bath Progressive Mixer Set 220 Curved Spout Trim Kit Lead Free

Product Specifications

LUCENT[®]



Specifications

Temperature Rating: 1-75°C

Pressure Rating: 150 - 1000kPa

Features

Must be paired with Style Switch 9939 Rough-In Kit

Easily Update Mixer Design and/or Finish with Any Style Switch Progressive Collection

High Quality, Solid Brass Backplate

Free Flow Aerator Included in Box for Bath Installation

Hidden Aerator for a Sleek, Stylish Appearance

Long-Lasting Hard Wearing High-Quality Finishes

Available In



Brushed
Gold
PVD
9999PBG



Gun
Metal
PVD
9999PGM



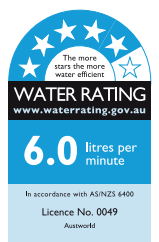
Matte
Black
Electroplated
9999PMB



Brushed
Nickel
PVD
9999PBN



For more information, contact:
Lucent, 15 Activity Crescent, Molendinar, Queensland 4214 Australia
P. 1300 474 714 E. info@lucentdesigns.com.au



All rights reserved 2024 Lucent. The images shown are for illustration purposes only and may not be an exact representation of the product. Modifications and adjustments may occur over time and the product should be used to confirm marking out and/or rough in as line drawings shown may vary from the item supplied over time. All measurements are in Millimetres and Colours are indicative and may vary from the images shown. Commercial and residential warranties may differ. Please refer to our website for full terms and conditions. <https://lucentdesigns.com.au/pages/warranty>