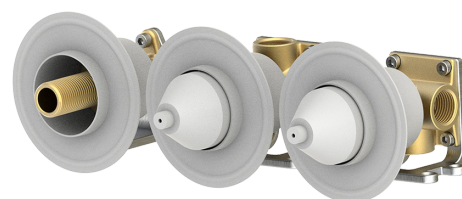
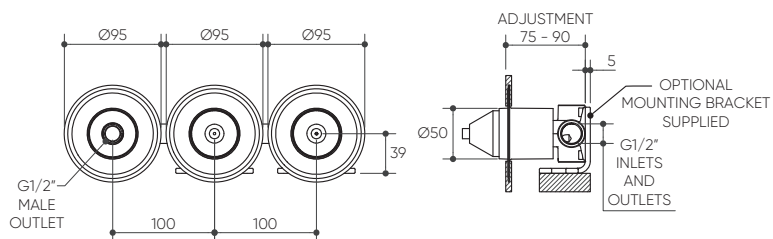


Lucent Style Switch In-Wall Diverter and Shower Progressive Body Lead Free 9940

Product Specifications

L U C E N T[®]



Features

Includes Water-Proof Flange Patented Design

Easily Update Mixer Design and/or Finish with Any Style Switch Mixer Collection

Ceramic 90° Rotary Diverter to Switch Between Hand-piece and a Second Connected Outlet

35mm Ceramic Mixer and Diverter Cartridges with 20 Year Warranty

Designed in Australia

Specifications

Temperature Rating: 1-75°C

Pressure Rating: 150 - 1000kPa



For more information, contact:
Lucent, 15 Activity Crescent, Molendinar, Queensland 4214 Australia
P. 1300 474 714 E. info@lucentdesigns.com.au



All rights reserved 2024 Lucent. The images shown are for illustration purposes only and may not be an exact representation of the product. Modifications and adjustments may occur over time and the product should be used to confirm marking out and/or rough in as line drawings shown may vary from the item supplied over time. All measurements are in Millimetres and Colours are indicative and may vary from the images shown. Commercial and residential warranties may differ. Please refer to our website for full terms and conditions. <https://lucentdesigns.com.au/pages/warranty>