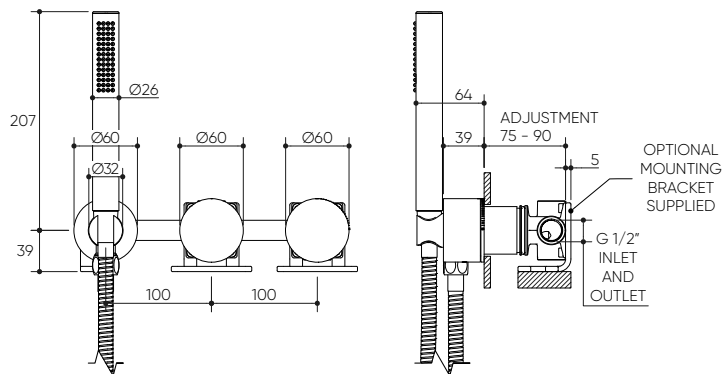


# CAHYA Wall Progressive Mixer with Diverter & Hand Shower Lead Free

LUCENT<sup>®</sup>

## Product Specifications



## Specifications

Temperature Rating: 1-75°C

Pressure Rating: 150 - 1000kPa

## Features

Complete Kit Includes Rough-In Kit and Fit-Off Kit

Includes Water-Proof Flange Patented Design

Easily Update Mixer Design and/or Finish with any Style Switch Progressive Collection

Ceramic 90° Rotary Diverter to switch between Hand-piece and a Second Connected Outlet

High Quality, Solid Brass Backplates

## Available In



Brushed  
Gold  
PVD  
13040PBG



Gun  
Metal  
PVD  
13040PGM



Matte  
Black  
Electroplated  
13040PMB



Brushed  
Nickel  
PVD  
13040PBN



For more information, contact:  
Lucent, 15 Activity Crescent, Molendinar, Queensland 4214 Australia  
P. 1300 474 714 E. [info@lucentdesigns.com.au](mailto:info@lucentdesigns.com.au)



All rights reserved 2024 Lucent. The images shown are for illustration purposes only and may not be an exact representation of the product. Modifications and adjustments may occur over time and the product should be used to confirm marking out and/or rough in as line drawings shown may vary from the item supplied over time. All measurements are in Millimetres and Colours are indicative and may vary from the images shown. Commercial and residential warranties may differ. Please refer to our website for full terms and conditions. <https://lucentdesigns.com.au/pages/warranty>