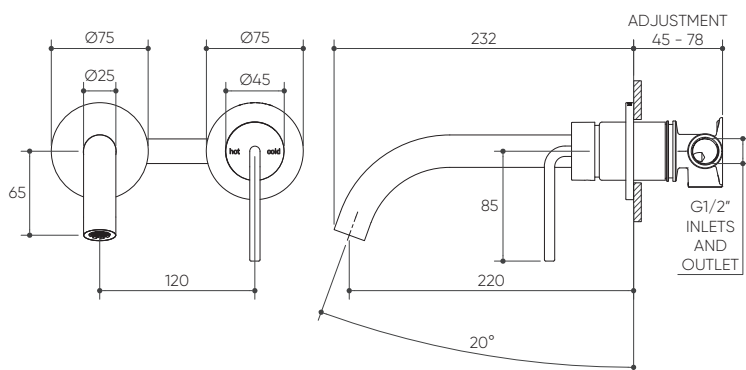


MEIRA Wall Basin/Bath Mixer Set 220 Curved Spout Lead Free

Product Specifications

LUCENT[®]



Specifications

Temperature Rating: 1-75°C

Pressure Rating: 150 - 1000kPa

Features

Complete Kit Includes Rough-In Kit and Fit-Off Kit

Easily Update Mixer Design and/or Finish with Any Style Switch Mixer Collection

Free-Flow Aerator Included in Box for Bath Installation

High Quality, Solid Brass Backplates

Available In



Brushed
Gold
PVD
12010PBG



Gun
Metal
PVD
12010PGM



Matte
Black
Electroplated
12010PMB



Brushed
Nickel
PVD
12010PBN



For more information, contact:
Lucent, 15 Activity Crescent, Molendinar, Queensland 4214 Australia
P. 1300 474 714 E. info@lucentdesigns.com.au



All rights reserved 2024 Lucent. The images shown are for illustration purposes only and may not be an exact representation of the product. Modifications and adjustments may occur over time and the product should be used to confirm marking out and/or rough in as line drawings shown may vary from the item supplied over time. All measurements are in Millimetres and Colours are indicative and may vary from the images shown. Commercial and residential warranties may differ. Please refer to our website for full terms and conditions. <https://lucentdesigns.com.au/pages/warranty>