

LUCENT[®]

Installation and Operating Instructions

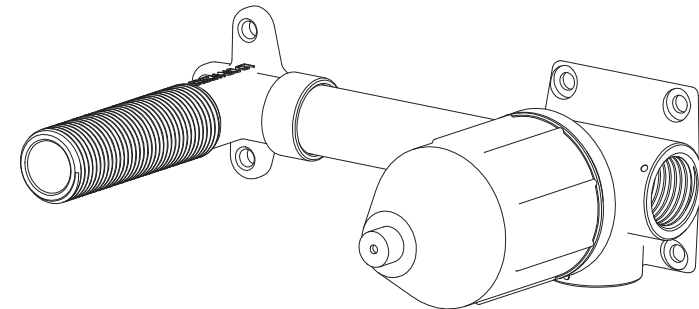
Warranty

Whilst every Lucent product is manufactured to the highest quality standards, we offer a comprehensive Warranty for complete peace of mind.

Residential Use		Commercial Use	
20 Years	Replacement Cartridge	15 Years	Replacement Cartridge
10 Years	Replacement products or parts	7 Years	Replacement products or parts
2 Year	Labour	1 Year	Labour

Warranty may become void due to any of the following:

- Inability to provide proof of purchase or equivalent documentation
- Product not installed by a licensed Plumber
- Failure to install product to national standards and state regulations
- Failure to install product in accordance with manufacturers installation instructions
- Pressure and Temperature Requirements:
 - Static inlet pressure range: 150 to 500kPa
 - Maximum hot water temperature: 75 degree celsius
 - Recommended operation temperatures: 1 – 75 degrees celsius
- Fitting of non-approved flow controllers in tap bodies or outlets
- If products are used for outdoor applications.
- Product used for non-potable water applications.
- Damage because of insufficient flushing of lines prior to installation. Service, repairs, or installation of non-Lucent replacement parts undertaken without Lucent's prior written approval.
- Damage to finishes caused by non adherence to cleaning instructions.



9939

**STYLE SWITCH IN-WALL PROGRESSIVE
BODY BASIN AND BATH KIT LEAD FREE**



Thank you for purchasing a quality Lucent product. Please note that this product must be installed by a qualified and registered plumber who is compliant with all the relevant regional requirements and who holds current certification.

Note: Please read all instructions prior to installation to limit warranty disputes should a claim arise.

Water Supply Requirements



recommended
working pressure

350KPa



maximum hot
water temperature

75 degrees

Pressure

- Recommended Minimum Hydrostatic Pressure: 150 to 500 kPa
- This pressure may be exceeded only under test conditions.
- Where hydrostatic pressure exceeds 500kPa, pressure limiting valve must be installed as per AS/NZS 3500

Temperature

- Water Temperature Range: 1°C to 75°C

Suitable Hot water Units

- Storage Tank: Yes
- Continuous Flow: Yes

WARRANTY SERVICE

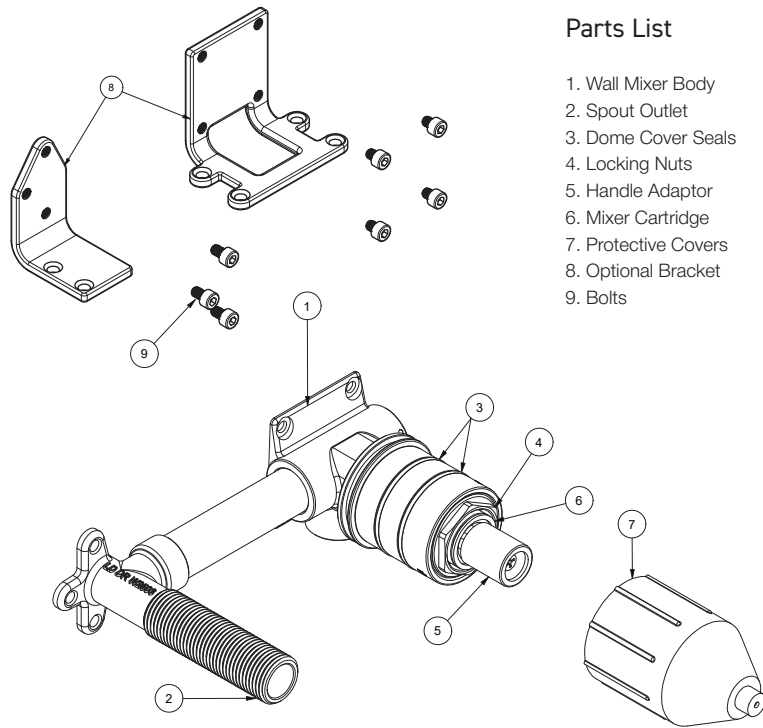
For all warranty service calls please contact your local store.

Phone: 1300 474 714

E-mail: warranty@lucentdesigns.com.au

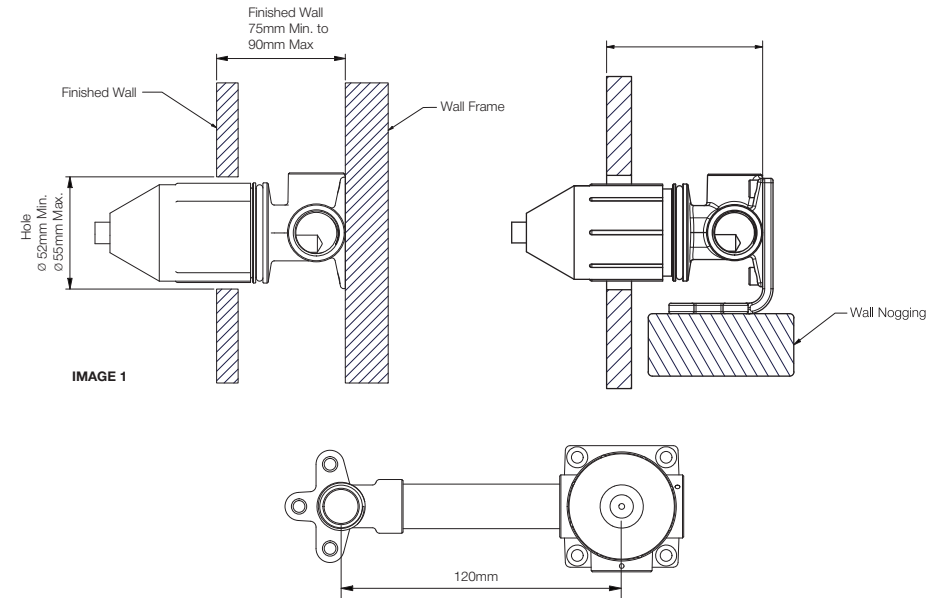


INS_1033.pdf rev.1.0



Parts List

1. Wall Mixer Body
2. Spout Outlet
3. Dome Cover Seal
4. Locking Nuts
5. Handle Adaptor
6. Mixer Cartridge
7. Protective Covers
8. Optional Bracket
9. Bolts



Installing Wall Body

- A. Mount the wall mixer body to suitable substrate ensuring that the depth to the finished wall is within parameters per the image #1. The outlet must be on the left when facing the wall and level in the horizontal position
- B. Ensure the hot water inlet and cold water inlet are connected as per image #2.
- C. The protective covers must always be kept on and should only be removed for testing the installation or fitting the trim kit.
- D. When pressure testing, ensure the mixer is open at half way point between hot and cold.

Prior to Installation

1. Check installation position and wall depth prior to installation to ensure this mixer is fit for purpose.
2. This mixer is not approved for outdoor installation.
3. This mixer is not suitable for non-potable water, bore water and tank water.
4. If water pressure exceeds 500 kPa operating pressure, an approved pressure limiting device must be installed. As per AS/NZS 3500.1-2003 (Clause 3.3.4)
5. Any modifications made to tapware without prior written consent from Lucent will void the warranty.
6. Tile adhesive/grout, waterproofing etc. must not interfere with the removal of the protective sleeves and installation of the trim components.
7. All Pipe work must be thoroughly flushed prior to the installation of this product.
8. Do not remove the cartridge when installing.
9. Do not braze directly onto the mixer, excessive heat will cause permanent damage.

