

## Warranty

Whilst every Lucent product is manufactured to the highest quality standards, we offer a comprehensive Warranty for complete peace of mind.

### Residential Use

15 Years Replacement products or parts  
10 Years Finish / 5 Years Matte Black  
1 Year Labour

### Commercial Use

5 Years Replacement products or parts  
1 Year Labour

Warranty may become void due to any of the following:

- Inability to provide proof of purchase or equivalent documentation
- Product not installed by a licensed Plumber
- Failure to install product to national standards and state regulations
- Failure to install product in accordance with manufacturers installation instructions
- Pressure and Temperature Requirements:

- Hydro Static inlet pressure range: 150 to 500kPa
- Maximum hot water temperature 75 degree celsius
- Recommended operating temperatures: 1 to 75 degrees celsius

- Fitting of non-approved flow controllers in tap bodies or outlets
- If products are used for outdoor applications.
- Product used for non-potable water applications.
- Damage because of insufficient flushing of lines prior to installation. Service, repairs, or installation of non-Lucent replacement parts undertaken without Lucent's prior written approval.
- Damage to finishes caused by non adherence to cleaning instructions.

## Cleaning Instructions:



CLEAN MICROFIBRE  
CLOTH



SOAPY WATER



PH BALANCE  
SOAP - BASED  
CLEANSER

### WARRANTY SERVICE

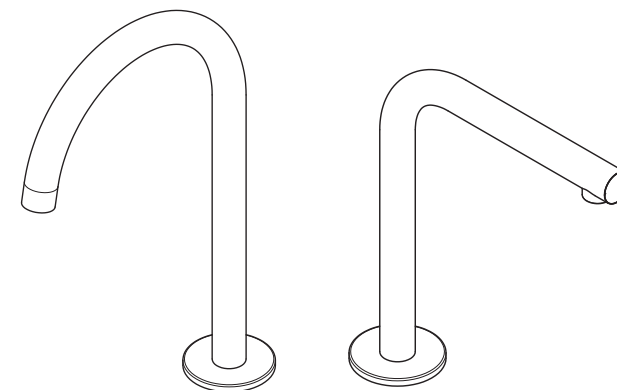
For all warranty service calls, please contact your local store.  
Phone: 1300 474 714  
E-mail: [warranty@lucentdesigns.com.au](mailto:warranty@lucentdesigns.com.au)



INS\_1015.pdf rev.1.0

# LUCENT<sup>®</sup>

## Installation and Operating Instructions



**93315**

HOB SINK  
GOOSENECK  
SPOUT

**93309**

HOB BASIN  
GOOSENECK  
SPOUT

**93312**

HOB BASIN  
RIGHT ANGLE  
SPOUT



Thank you for purchasing a quality Lucent product. Please note that this product must be installed by a qualified and registered plumber who is compliant with all the relevant regional requirements and who holds current certification.

Note: Please read all instructions prior to installation to limit warranty disputes should a claim arise.

## Water Supply Requirements



recommended  
working pressure  
**350KPa**



maximum hot  
water temperature  
**75 degrees**

### Pressure

- Recommended Minimum Hydrostatic Pressure: 150 to 500 kPa
- This pressure may be exceeded only under test conditions.
- Where hydrostatic pressure exceeds 500kPa, pressure limiting valve must be installed as per AS/NZS 3500

### Temperature

- Water Temperature Range: 1°C to 75°C

### Suitable Hot water Units

- Storage Tank: Yes
- Continuous Flow: Yes

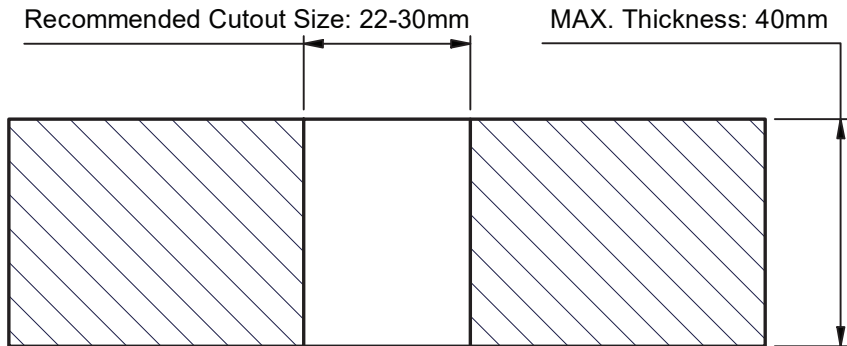


## Installation Instructions

Note to Plumber: Please provide this leaflet to the owner after installation.

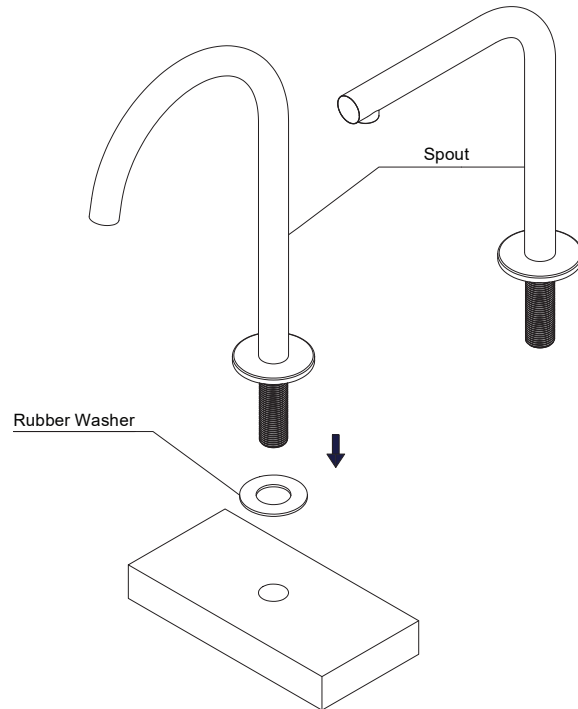
### STEP 1

Check hole size & bench depth to ensure Spout is suitable.



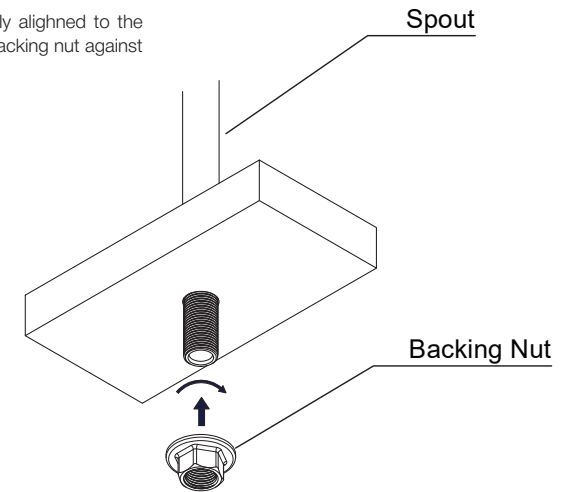
### STEP 2

Ensure the supplied rubber washer is in place. Insert spout through the Sink, Basin or Benchtop.



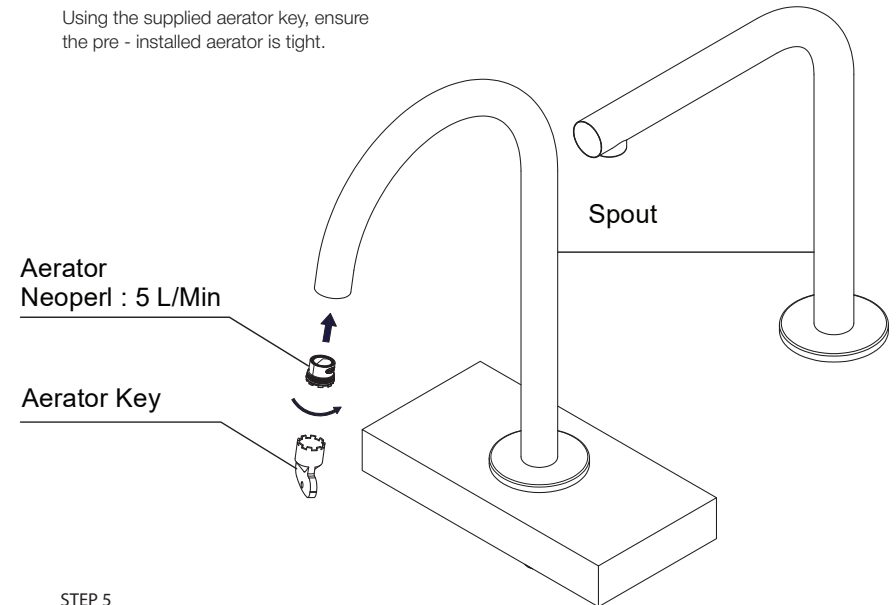
### STEP 3

Ensure the spout is correctly aligned to the Basin or Sink. Tighten the backing nut against the basin.



### STEP 4

Using the supplied aerator key, ensure the pre-installed aerator is tight.



### STEP 5

Connect the outlet (1/2 G Thread) to the water supply using an approved connection method.